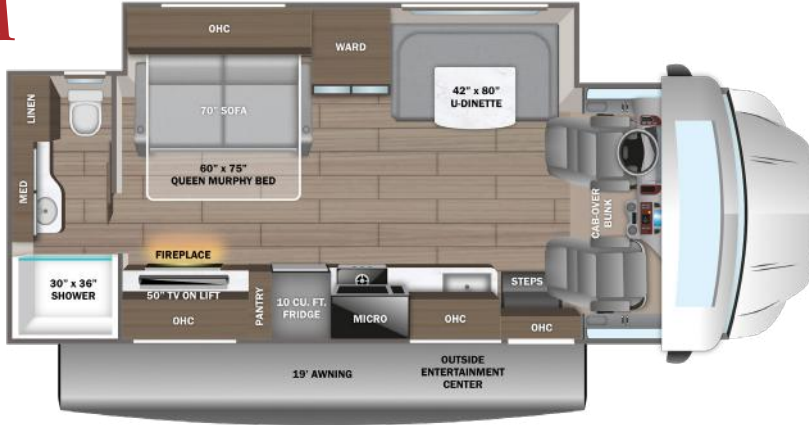


ESTEEM XL

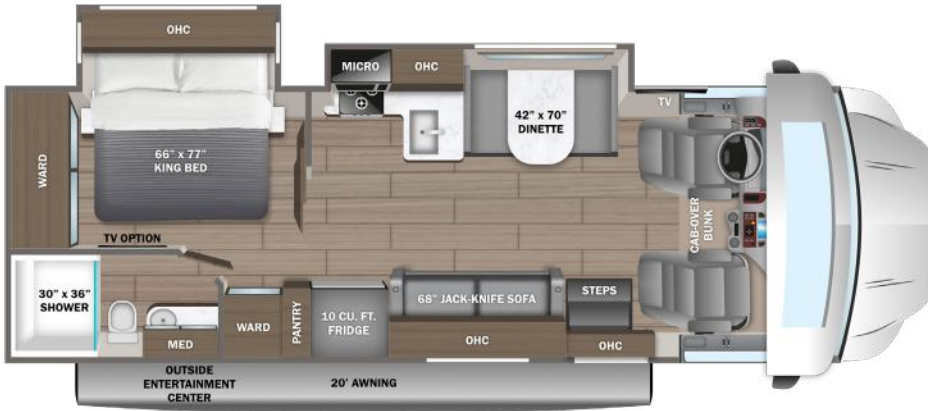
2026 Diesel Super Class C Motorhome



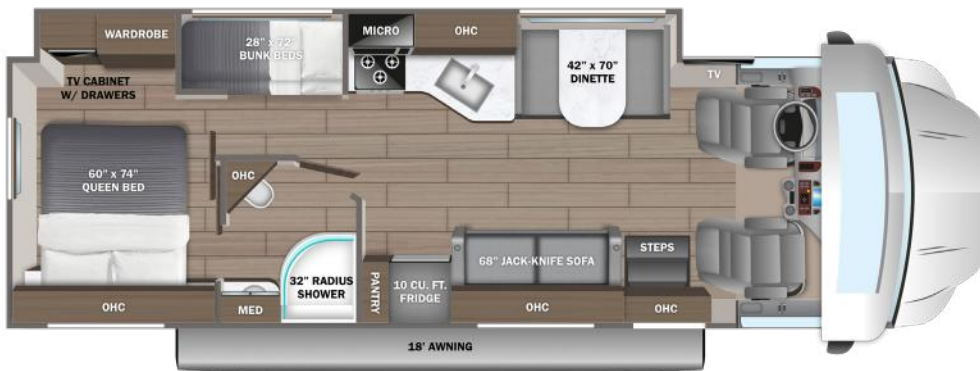
30M



32U



33F



PAINT SELECTIONS



Standard Partial Paint



Harvest Night Full-Body Paint



Night Shade Full-Body Paint



Summer Equinox Full-Body Paint



Winter Sky Full-Body Paint

CUSTOMER VALUE PACKAGE

E-Z Drive™ Elite: Computer-balanced driveshaft, heavy-duty rear stabilizer bar and standard front stabilizer bar
 One-piece, seamless fiberglass front cap
 Automotive-bonded panoramic window in front cap with power shade
 Automatic hydraulic leveling jacks
 Frameless windows
 Electric patio awning with LED lights
 6,000W diesel generator with auto-gen start
 2,000W inverter
 15,000 BTU A/C with heat pump
 200W solar panel with dual controller and second house battery
 Firefly Multiplex system - wall-mounted touchscreen and mobile app for total coach control
 LED HD Smart TV in living area

STANDARD CHASSIS EQUIPMENT

Ford® F550 4x4 chassis (30M, 32U)
 Ford® F600 4x4 chassis (33F)
 GVWR - 19,500 lb. (30M, 32U); 22,000 lb. (33F)
 GCWR - 31,500 lb. (30M, 32U); 34,000 lb. (33F)
 6.7L Power Stroke V8 Turbo diesel engine with block heater
 - 330 HP at 2,200 RPM and 950 ft. lb. torque at 1,800 RPM
 10-speed automatic transmission
 332-amp alternator
 G-rated tires- 225/70R19.5 (30M, 32U)
 All-terrain tires - 245/70R19.5 (33F)
 Steel wheels with matte black liners
 Hellwig® helper springs (30M, 32U)
 12,000 lb. rear hitch receiver
 7-pin plug
 Ford® AdvanceTrac® with RSC® (roll stability control) and trailer sway control
 Integrated trailer brake controller
 Dual chassis batteries (750 CCA 78 AH)
 Dual fuel tanks (26.5 gal. and 40 gal.)
 2 in. rear lift
 Ford® SYNC® 4 infotainment center with Apple® CarPlay™ and Android Auto™
 Audible lane departure warning
 Pre-Collision Assist® with automatic emergency braking (AEB)
 SOS Post Crash Alert System™
 Driver and passenger airbags
 Safety Canopy® system with roll-fold side-curtain airbags
 Remote keyless entry and perimeter anti-theft alarm
 SecuriLock® anti-theft ignition
 Quad dual-beam halogen headlights
 Rainlamp wiper activated headlights
 Remote start
 Adjustable gas/brake pedals
 Cruise control
 Power windows and door locks
 Auxiliary start switch
 8-way power driver seat
 Tilt steering wheel
 Privacy curtain for cab area

STANDARD EXTERIOR EQUIPMENT

TuffShell™ vacuum-bond laminated roof, floor and sidewalls
 Bead-foam insulation (R-24 max roof, R-9 max floor, R-5 max walls)
 One-piece, seamless, fiberglass roof
 Fiberglass exterior walls with partial paint and vinyl graphics
 Entrance door with industry's largest travel-view window
 Electric-powered entrance step with integrated house battery compartment
 Slideout awning(s)
 Exterior LED HD Smart TV with (2) JBL® high-output, marine-grade exterior speakers
 Lockable storage compartments with slam latches
 Third brake light
 Roof ladder
 Prep for satellite dish
 Cable TV hookup with RG-6 coax
 Winegard 2.0 Wi-Fi/4G antenna
 (2) 6V AGM house batteries
 Transfer switch with reverse polarity protection
 50-amp electrical service
 Detachable power cord
 16.5 gal. propane tank (56 lb.)
 LP quick-connect hookup
 Heated holding tanks (12V pads)
 Exterior utility center
 Winterization drain system
 Black tank flush
 Outside shower
 12V demand water pump
 Water filtration system

STANDARD INTERIOR EQUIPMENT

Custom-molded ABS surround in cab-over area
 Overhead bunk with 750 lb. capacity and safety net
 84 in. interior ceiling height with padded vinyl ceiling
 High-intensity recessed LED ceiling lights
 LED-lit fascia
 Hardwood cabinet doors and drawer fronts
 Soft-close cabinet doors and drawers
 Deluxe hidden cabinet hinges
 Ball-bearing drawer guides
 Blackout night roller shades
 30,000 BTU auto-ignition furnace
 10 gal. gas/electric water heater
 JBL® audio system
 Entegra-exclusive, easy-operation legless dinette table (32U,33F)
 U-shaped dinette (30M)
 2-point lap safety belts in all designated seating locations
 Car seat tethers (select floorplans)
 10 cu. ft. 12V refrigerator
 InVision™ all-in-one cooktop and oven
 Residential-size microwave
 Recessed stainless steel kitchen sink with sink covers
 Solid-surface kitchen countertops
 Decorative kitchen backsplash
 Pop-up charging station in kitchen with 120V outlets and USB ports

Walk-around, king-size bed with bedspread and nightstands (32U)
 Queen-size power Murphy Bed (30M)
 Queen-size bed with bedspread and nightstands (33F)
 Bunks with industry-exclusive 300 lb. capacity each (33F)
 USB port and wireless charging in nightstands
 Large wardrobes
 Shower with decorative surround, glass door, skylight and light
 Aqua View® SHOWERMISER™ water management system
 Recessed stainless steel bathroom sink
 Porcelain toilet with foot flush
 Powered roof vent in bathroom with wall switch
 Smoke alarm
 Carbon monoxide detector
 Fire extinguisher

OPTIONS

Power theater seating
 LED HD Smart TV in bedroom (32U, 33F)
 Dual A/C units (15,000 and 13,500 BTU) with power management system (no heat pump)
 Aluminum rims
 Folding windshield sun shade

GOLDEN STATE EDITION PACKAGE (AVAILABLE ON 32U IN CALIFORNIA ONLY)

Golden State Full-Body Paint
 Heavy-duty front stabilizer bar
 Upgraded Koni FSD shocks
 2 in. BDS radius arm suspension lift
 Aluminum wheels
 Upgraded front bumper
 Aftermarket grille



NO ONE OFFERS A BETTER WARRANTY

At Entegra Coach, we build our RVs to handle every adventure, then back them with our industry-leading 2+3 limited warranty. Our 2-year limited warranty has you covered for 2 camping seasons. That's 730 days. In addition, our 3-year structural limited warranty has you covered for 3 camping seasons or 1,095 days. You won't find a better limited warranty in the business, because the only strings we attach are those that deliver the ultimate in reliability. For a copy of our 2-year limited + 3-year structural limited warranty with complete terms and conditions, please contact your local Entegra Coach dealer.

It is important for your safety and enjoyment that you are aware of the weights and tow ratings of the RV you select. Consult a competent advisor for questions or advice. Whether you are new to RVing or a veteran, get a feel for the performance of your RV before heading out on the roadways. When you tow a vehicle with your RV, you must drive differently than when you drive a single vehicle. Practice hooking up, driving, backing up and braking in a safe environment or seek out professional instruction. Jayco affixes a weight label to each RV which lists weight information for that vehicle. Refer to that label to verify the vehicle will meet your requirements. Gross Vehicle Weight Rating (GVWR): The maximum permissible weight of the motorhome, including the Unloaded Vehicle Weight (UVW) plus passengers, personal items, all cargo, fluids, options and dealer-installed accessories. The GVWR is equal to or greater than the sum of the UVW and the Cargo Carrying Capacity. Gross Combined Weight Rating (GCWR): The maximum allowable combined weight of the motorhome used as a tow vehicle and the attached towed vehicle.

Floorplan	GVWR (lbs.)	GCWR (lbs.)	Wheel Base	Overall Length	Exterior Height w/ A/C & Satellite	Exterior Width	Interior Height	Fresh Water Capacity (gal.)	Grey Waste Water Capacity (gal.)	Black Waste Water Capacity (gal.)
30M	19,500	31,500	212"	31' 4"	12' 6"	100"	84"	53	31	31
32U	19,500	31,500	227"	33' 5"	12' 6"	101"	84"	42.5	31	31
33F	22,000	34,000	248"	34' 11"	12' 6"	100"	84"	53	32	32



Entegra Coach, Inc., P.O. Box 460, Middlebury, IN 46540, www.entegracoach.com. See dealer for further information and prices. All information in this brochure is the latest available at the time of publication approval. Entegra Coach reserves the right to make changes and to discontinue models without notice or obligation. Photos in this brochure may show optional equipment and props for photography purposes. RVs built for sale in Canada may differ to conform to Canadian codes. ©2025 Entegra Coach, Inc. Printed in U.S.A. 2033074



LEGACY ISN'T LEFT,
IT'S LIVED.